

9S-NOD-09-11

INDOOR NODE

9S-NOD-09-12

INDOOR NODE with backup battery

Product description

- 9Solutions Indoor Nodes are locating base stations of the 9Solutions real-time locating system forming a self-organized wireless network. The 9Solutions Node network ensures accurate locating, scalability and hassle free operation.
- Receiving 9Solutions Tag signals and reporting the locating data via the 9Solutions Node network and the 9Solutions CCU gateway to the 9Solutions server.
- Transferring data from other 9Solutions infrastructure products via the 9Solutions Node network.
- Fast and effortless installation
- Remote diagnostics.
- 9Solutions system operates with an independent wireless Bluetooth® infrastructure.
- A solid state relay output and one Input: a digital Input/Output for external devices
- Supports 12-30 V DC low voltage input and 5 V DC uUSB power supply.
- Optionally available with backup battery ensuring 24 h operation during power failures.



Target of use

- Hospitals
- Health centers
- Assisted living facilities

Operational environment

- Fixed installations

Accessories



Indoor Node with backup battery
9S-NOD-09-12

- Indoor Node with backup battery



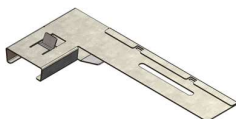
Indoor Node installation plate, 50 pcs
9S-ACC-01-04

- Wall installation plate



Indoor Node suspend bracket
9S-ACC-01-89

- Indoor Node suspend bracket for suspension installation



Indoor Node cable tray bracket
9S-ACC-01-94

- Indoor Node suspend bracket for cable tray installation
- Dimensions 203 x 84 x 13 mm
- Strain relief can be done with a cable tie

Technical information

LED	1 two color LED, Red / Green.
Operating voltage (uUSB)	5 V DC
Operating voltage (I/O terminal)	12-30 V DC
Power consumption	0,5 W (2,5 W with backup battery)
Backup battery	1050 mAh rechargeable Lithium polymer battery
Operating time with backup battery	24 h depending on use case
Frequency	Bluetooth®, 2.4 GHz, ISM band (2400-2483,5 MHz)
Output power	8 dBm
Communication distance, wireless	7,5-15 m depending on building construction
External Out / In (I/O terminal)	Potential free input (5V) - for external switches etc.
Output	Potential free, solid state relay, max. 50 V, 200 mA
Waterproof rating	Indoor use
Operating temperature	-20 °C to + 55 °C
Storage temperature	-40 °C to + 70 °C
Humidity	5-95 % relative humidity, non-condensing
Weight	50 g (70g with backup battery)
Dimensions	170 x 42 x 13 mm
Fixing	Affixed with installation installation plate or separate bracket

Additional services



9S-SWD-02-10

Factory refurbishment for Nodes without backup battery

- Factory refurbishment for all Nodes without backup battery